

JOB

HINKLE / PADDEN HILLS

Attachment A



Residential Commercial Remodel

PO Box 1075, Bellingham, WA 98227-1075

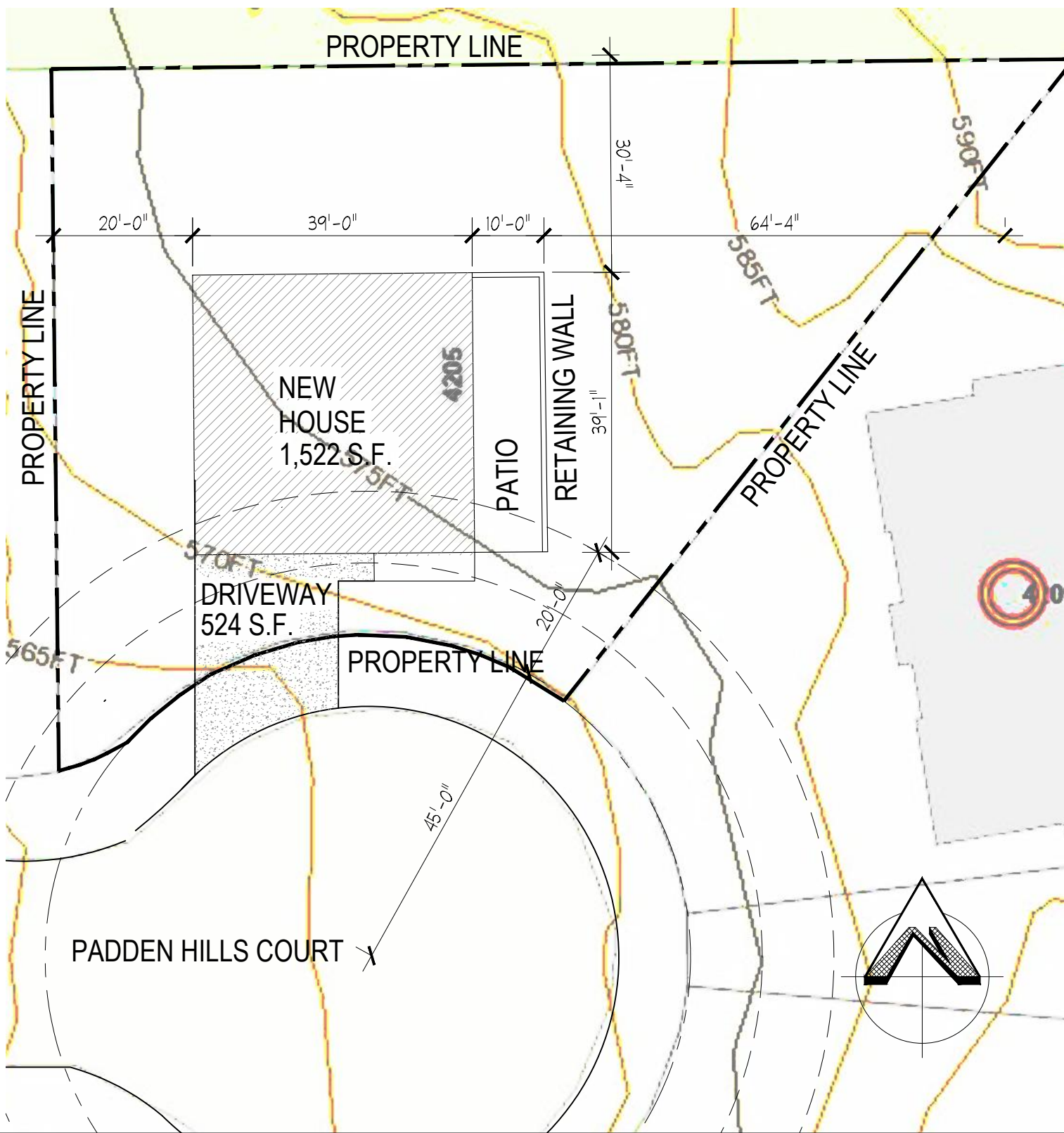
Telephone and FAX: 360.393.3131

Website: www.fullerbd.com

DRAWN BY TODD F. DATE 5-18-23

CHECKED BY _____ SCALE 1" = 20'-0"

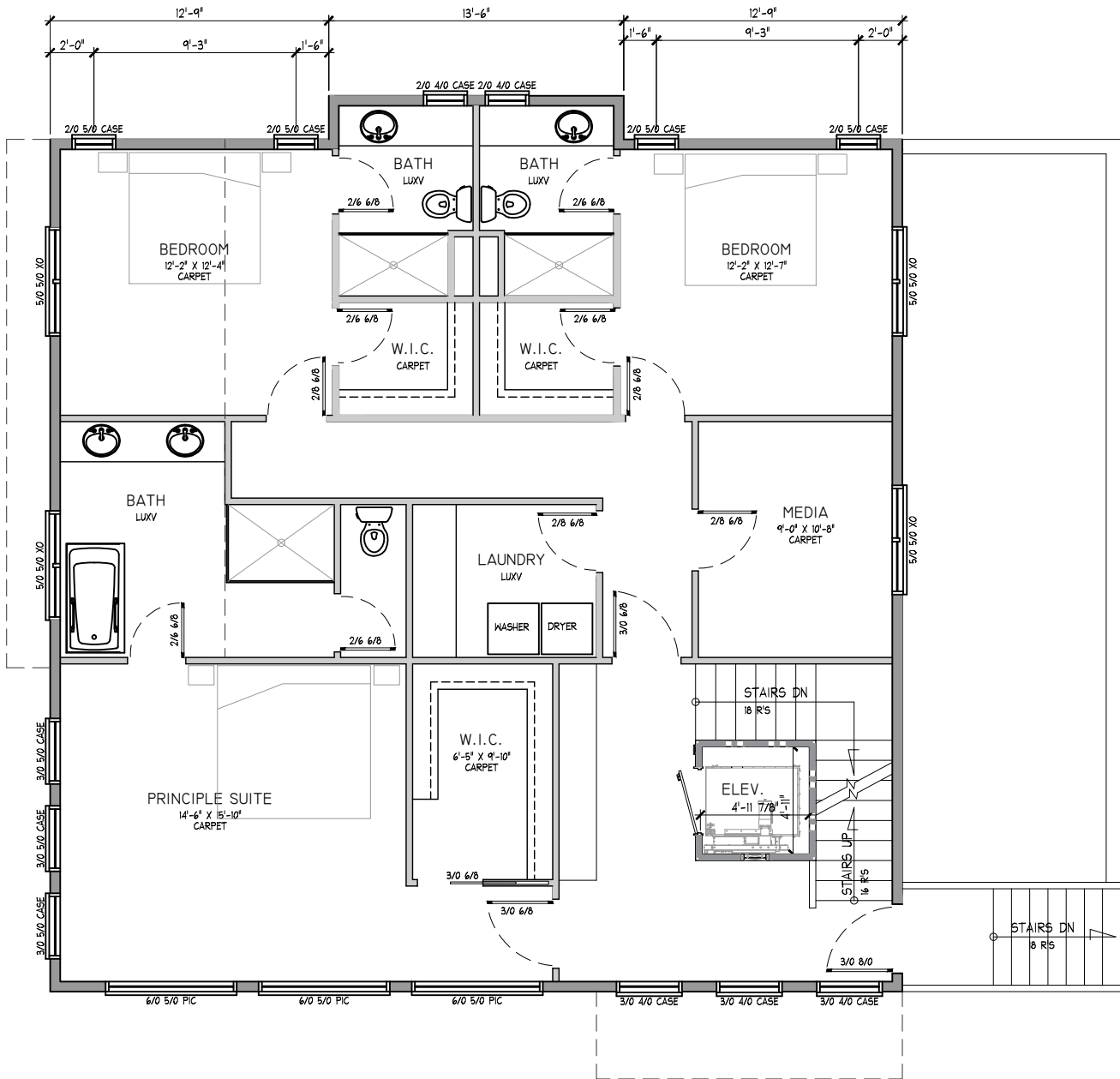
SITE PLAN





Residential Commercial Remodel
PO Box 1075, Bellingham, WA 98227-1075
Telephone and FAX: 360.393.3131
Website: www.fullerbd.com

MAIN FLOOR PLAN



MAIN FLOOR
1,520 SQ. FT.

JOB HINKLE / PADDEN HILLS

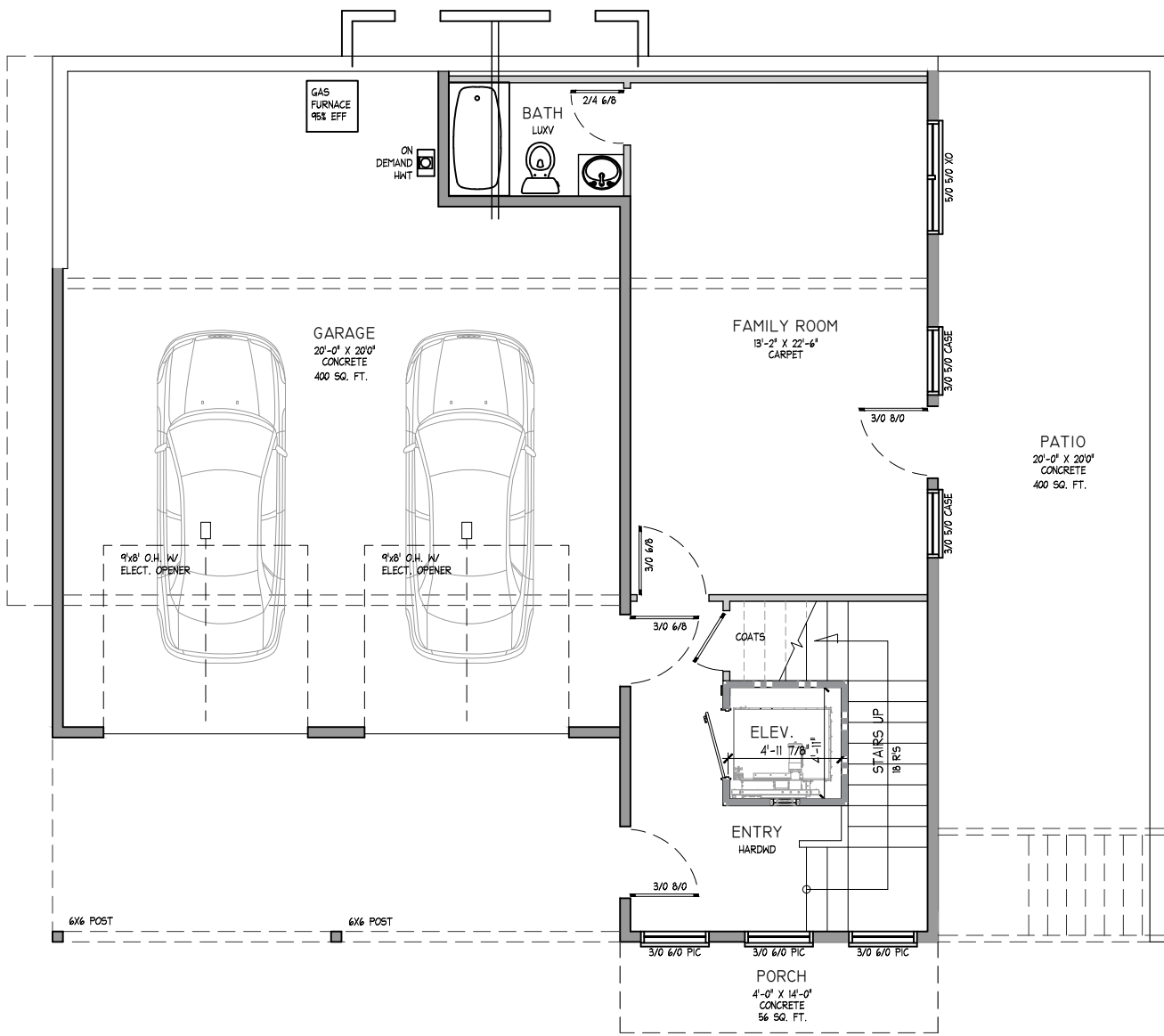
DRAWN BY TODD F. DATE 5-18-23

CHECKED BY _____ SCALE 1/8" = 1'-0"



Residential Commercial Remodel
PO Box 1075, Bellingham, WA 98227-1075
Telephone and FAX: 360.393.3131
Website: www.fullerbd.com

LOWER FLOOR PLAN



LOWER FLOOR
580 SQ. FT.

JOB HINKLE / PADDEN HILLS

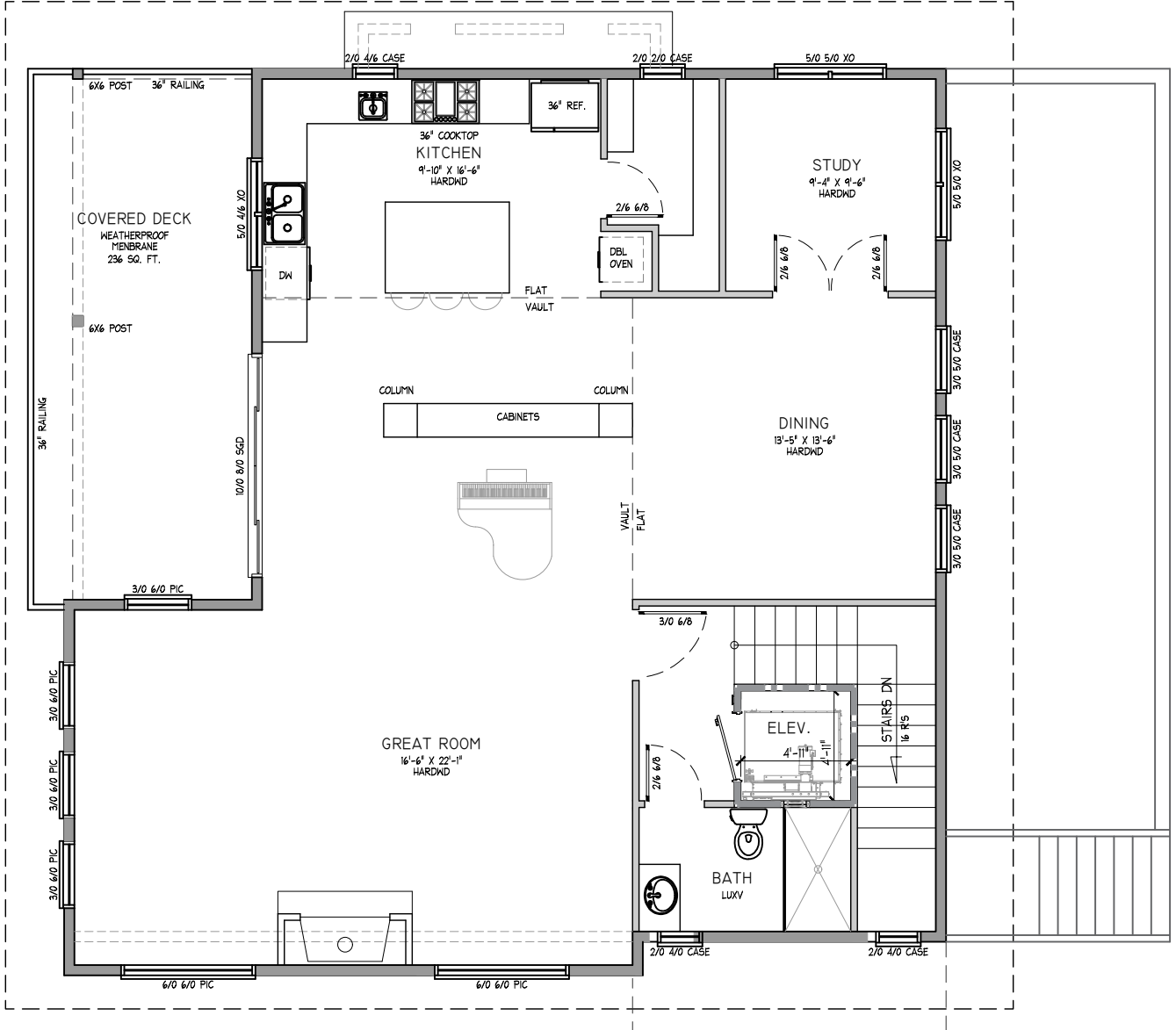
DRAWN BY TODD F. DATE 5-18-23

CHECKED BY _____ SCALE 1/8" = 1'-0"



Residential Commercial Remodel
PO Box 1075, Bellingham, WA 98227-1075
Telephone and FAX: 360.393.3131
Website: www.fullerbd.com

UPPER FLOOR PLAN



UPPER FLOOR
1,375 SQ. FT.

JOB HINKLE / PADDEN HILLS

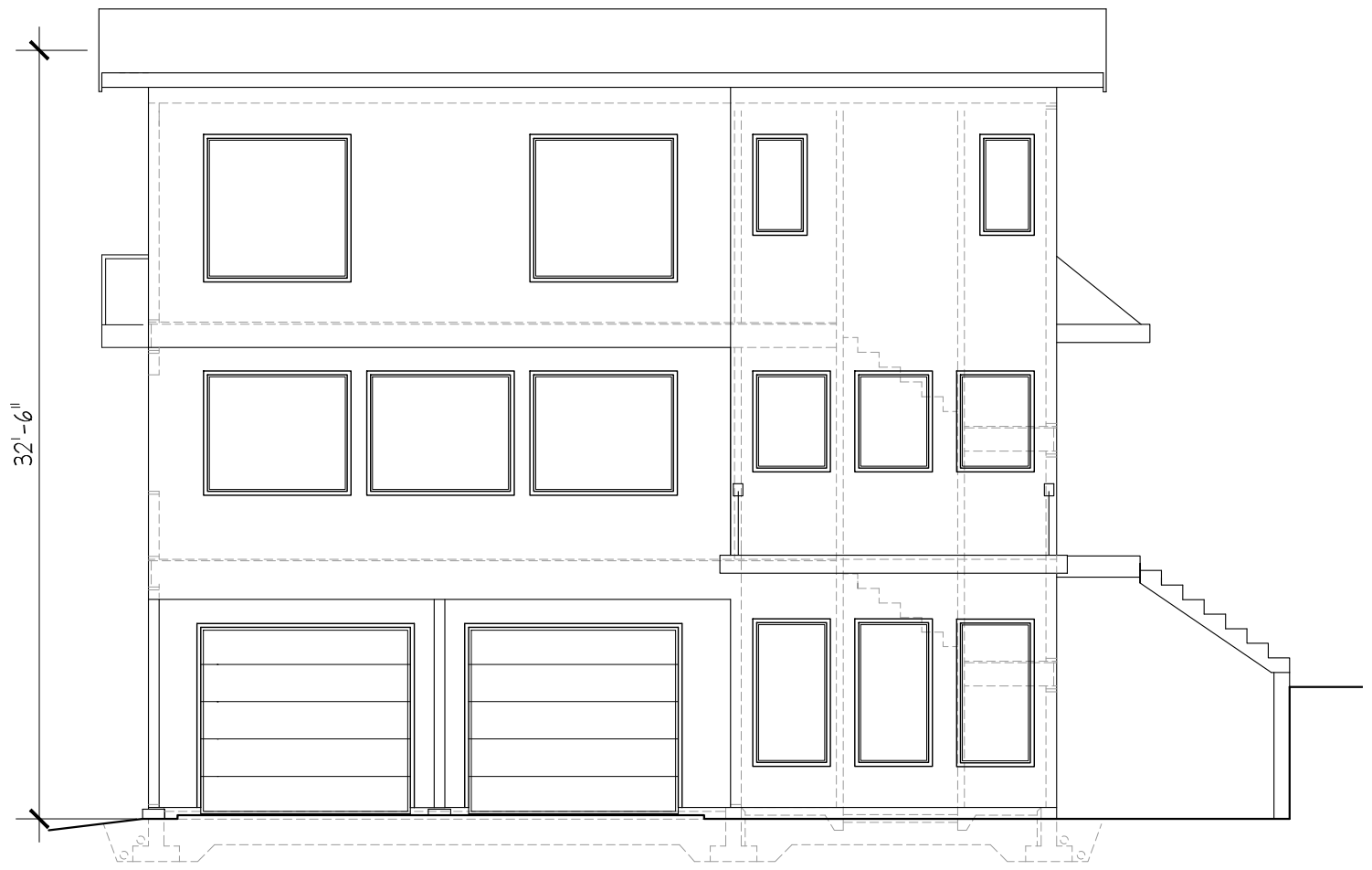
DRAWN BY TODD F. DATE 5-18-23

CHECKED BY _____ SCALE 1/8" = 1'-0"



Residential Commercial Remodel
PO Box 1075, Bellingham, WA 98227-1075
Telephone and FAX: 360.393.3131
Website: www.fullerbd.com

FRONT ELEVATION



JOB HINKLE / PADDEN HILLS

DRAWN BY TODD F. DATE 5-18-23

CHECKED BY _____ SCALE 1/8" = 1'-0"



Residential Commercial Remodel
PO Box 1075, Bellingham, WA 98227-1075
Telephone and FAX: 360.393.3131
Website: www.fullerbd.com

SIDE (WEST) ELEVATION



JOB HINKLE / PADDEN HILLS

DRAWN BY TODD F. DATE 5-18-23

CHECKED BY _____ SCALE 1/8" = 1'-0"



Residential Commercial Remodel
PO Box 1075, Bellingham, WA 98227-1075
Telephone and FAX: 360.393.3131
Website: www.fullerbd.com

SIDE (EAST) ELEVATION



JOB HINKLE / PADDEN HILLS

DRAWN BY TODD F. DATE 5-18-23

CHECKED BY _____ SCALE 1/8" = 1'-0"



Residential Commercial Remodel
PO Box 1075, Bellingham, WA 98227-1075
Telephone and FAX: 360.393.3131
Website: www.fullerbd.com

REAR (NORTH) ELEVATION

